

Plasmid pMRLB.44 Containing Gene Rv1411c (Protein LprG) from *Mycobacterium tuberculosis*

Catalog No. NR-13295

This reagent is the tangible property of the U.S. Government.

Product Description: NR-13295 is a recombinant expression vector containing *Mycobacterium tuberculosis* gene Rv1411c, which encodes a probable conserved lipoprotein, LprG. Gene Rv1411c was amplified by PCR and cloned into pVV16 for expression in *Mycobacterium smegmatis*.

Lot: 04.MS.03.26

Manufacturing Date: 26MAR2004

TEST	SPECIFICATIONS	RESULTS
Agarose Gel Electrophoresis (see attached QC Gel)¹ Linearization with <i>NdeI</i> Linearization with <i>HindIII</i> Digestion with <i>Clal</i> Digestion with <i>NdeI</i> and <i>HindIII</i>	~ 6.5 kb ~ 6.5 kb ~ 0.44 kb, 6.0 kb fragments ~ 0.71 kb (insert); ~ 5.8 kb (vector)	~ 6.5 kb ~ 6.5 kb ~ 0.44 kb, 6.0 kb ~ 0.71 kb; ~ 5.8 kb
Concentration by OD₂₆₀	Report results	0.9 µg/µL
Absorbance Ratio (OD₂₆₀/OD₂₈₀)	Report results	1.9

¹Performed by Colorado State University under the TB Vaccine Testing and Research Materials Contract (NIH)

Date: 31 AUGUST 2009

Signature: Signature on File

Title: Technical Manager, BEI Authentication or designee

ATCC[®], on behalf of BEI Resources, hereby represents and warrants that the material provided under this certificate has been subjected by the contractor to the tests and procedures specified and that the results described, along with any other data provided in this certificate, are true and accurate to the best of ATCC[®]'s knowledge.

ATCC[®] is a trademark of the American Type Culture Collection.

You are authorized to use this product for research use only. It is not intended for human use.



QC gel

Restriction enzymes used in QC analysis:

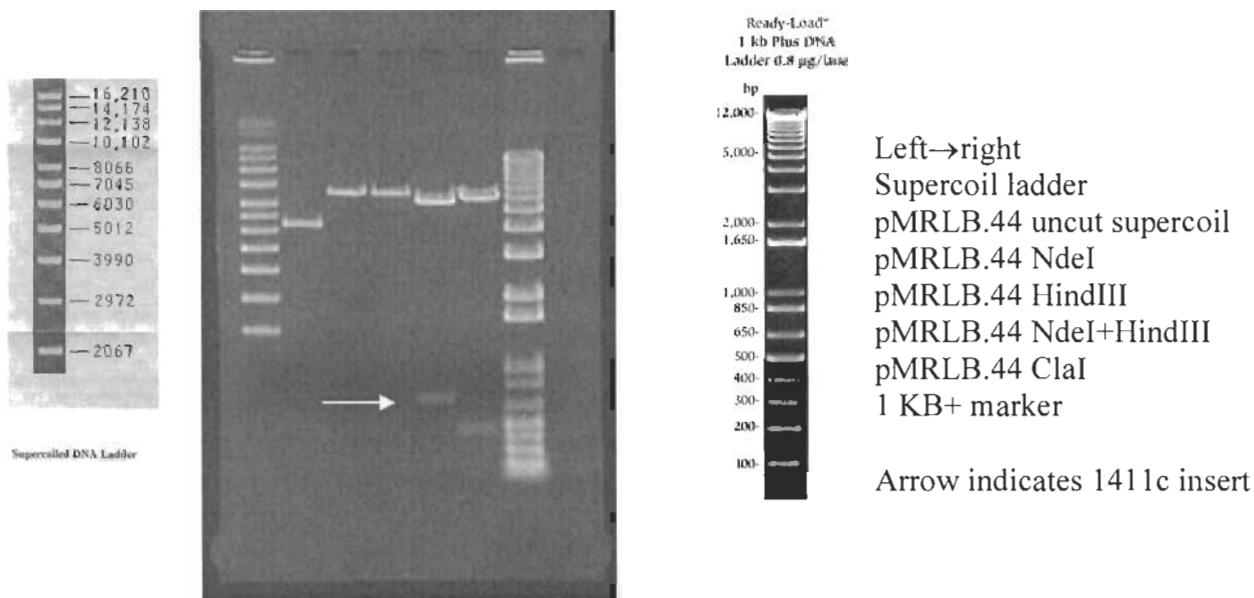
NdeI & HindIII (cloning), ClaI (insert diagnostic – 1 site each in 1411c and PVV16)

Expected size of restriction fragments

Vector 5.8 kb pVV16 + NdeI +HindIII
Insert 0.71 Rv1411c + NdeI +HindIII
Other 6.5 kb linearized plasmid – NdeI, HindIII and 6.5 kb supercoil
0.44 kb and 6.0 kb fragments - ClaI

Gel description (file number, % agarose, buffer) Gel kb15 notebook 3 03-30-04
1.0 % agarose/1XTAE

Molecular weight markers Invitrogen 1KB Plus, Invitrogen Supercoiled DNA Ladder



Generated by Kerry Bloosman Date 11/02/04
Supervisor [Signature] Date 11/3/04

Form 4.2.03.JB