

Genomic DNA from *Cryptosporidium hominis*, Isolate TU502

Catalog No. NR-2520

This reagent is the property of the U.S. Government.

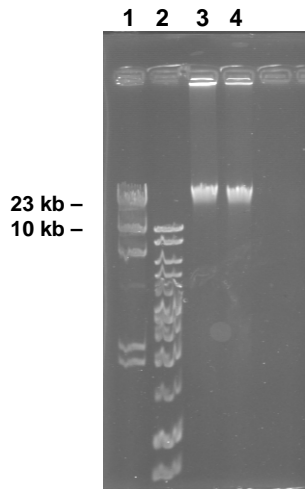
Product Description: Genomic DNA was isolated from a preparation of *Cryptosporidium hominis*, isolate TU502.

Lot: 4735512

Manufacturing Date: NOV2005

TEST	SPECIFICATIONS	RESULTS
Agarose Gel Electrophoresis	High molecular weight genomic DNA (> 20 kb)	High molecular weight genomic DNA (> 20 kb) (see Figure 1)
PCR Amplification of COWP Gene Followed by RFLP Analysis	<i>Cryptosporidium hominis</i>	<i>Cryptosporidium hominis</i> (see Figure 2)
Concentration by PicoGreen® Measurement	Report results	10 ng/μL
Bacterial Genomic DNA	< 0.1%	< 0.1%

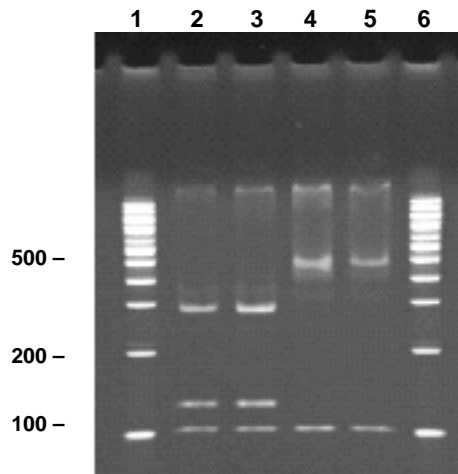
Figure 1



100 ng of genomic DNA was electrophoresed on a 0.8% agarose gel with DNA markers and stained with ethidium bromide.

Lanes 1 and 2: DNA ladders
 Lane 3: *Cryptosporidium hominis*, TU502 (BEI Resources NR-2520)
 Lane 4: *Cryptosporidium parvum*, Iowa (BEI Resources NR-2519)

Figure 2



PCR reactions were performed using COWP primers (*Cryptosporidium*-specific) and the amplicons were digested with *Rsa* I. The digests were run on a 10% TBE PAGE gel.

Lanes 1 and 6: 100 bp DNA ladder (Promega G2101)

Lane 2: Standard, *Cryptosporidium hominis*, TU502

Lane 3: NR-2520

Lane 4: NR-2519

Lane 5: Standard, *Cryptosporidium parvum*, Iowa

Date: 07 NOV 2006

Signature: Signature on File

Title: Technical Manager, BEI Authentication

ATCC[®], on behalf of BEI Resources, hereby represents and warrants that the material provided under this certificate has been subjected by the contractor to the tests and procedures specified and that the results described, along with any other data provided in this certificate, are true and accurate to the best of ATCC[®]'s knowledge.

ATCC[®] is a trademark of the American Type Culture Collection.

You are authorized to use this product for research use only. It is not intended for human use.