

Genomic DNA from *Campylobacter jejuni*, Strain HB95-29

Catalog No. NR-3060

Product Description: Genomic DNA was isolated from a preparation of *Campylobacter jejuni* (*C. jejuni*), strain HB95-29.

Lot¹: 59670688

Manufacturing Date: 15FEB2011

TEST	SPECIFICATIONS	RESULTS
Sequencing of 16S Ribosomal RNA Gene (~ 1410 base pairs)	Consistent with <i>C. jejuni</i>	Consistent with <i>C. jejuni</i> ²
Agarose Gel Electrophoresis	High molecular weight chromosomal DNA	High molecular weight chromosomal DNA (Figure 1)
Concentration by PicoGreen[®] Measurement	0.7 to 1.5 µg in 25 to 100 µL per vial	1.1 µg in 48 µL per vial (24 µg/mL)
Functional Activity by PCR Amplification 16S ribosomal RNA gene	~ 1500 bp amplicon	~ 1500 bp amplicon
OD₂₆₀/OD₂₈₀ Ratio	1.7 to 2.0	2.0
Bacterial Inactivation 10% of total yield plated on Tryptic Soy Agar with 5% defibrinated sheep blood ^{3,4}	No viable bacteria detected	No viable bacteria detected

¹The bacterial preparation used for extraction of genomic DNA was produced by broth inoculation of BEI Resources NR-402 (Lot 7642595). After incubation for 48 hours at 37°C in a microaerophilic (3 to 5% O₂ and 5% CO₂) atmosphere, genomic DNA was extracted using proprietary technology.

²Also consistent with *Campylobacter coli*

³7 days at 37°C and microaerophilic (3-5% O₂ and 5% CO₂) atmosphere

⁴An extraction procedure was used that has been shown to consistently inactivate 100% of Gram-positive and Gram-negative bacteria.

Date: 03 JUN 2011

Signature:



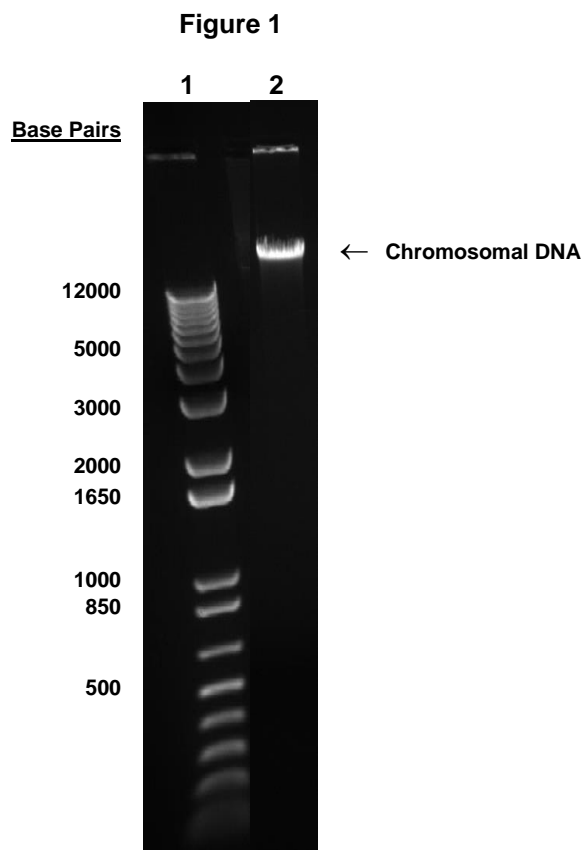
Title: Technical Manager, BEI Authentication or designee

ATCC[®], on behalf of BEI Resources, hereby represents and warrants that the material provided under this certificate has been subjected by ATCC[®] to the tests and procedures specified and that the results described, along with any other data provided in this certificate, are true and accurate to the best of ATCC[®]'s knowledge.

ATCC[®] is a trademark of the American Type Culture Collection.

You are authorized to use this product for research use only. It is not intended for human use.





Lane 1: Invitrogen™ 1Kb Plus DNA Ladder™
Lane 2: 200 ng of NR-3060