

Capnocytophaga ochracea, Strain F0287

Catalog No. HM-15

Product Description: *Capnocytophaga ochracea* (*C. ochracea*), strain F0287 was isolated from human subgingival dental plaque in the United States.

Lot^{1,2}: 60944642

Manufacturing Date: 03AUG2012

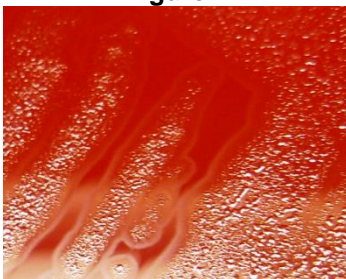
TEST	SPECIFICATIONS	RESULTS
Phenotypic Analysis Cellular morphology Colony morphology ³	Report results Report results	Gram-negative rods Irregular, flat, dull and rough (Figure 1)
Genotypic Analysis Sequencing of 16S ribosomal RNA gene (~ 1460 base pairs)	≥ 99% identical to GenBank: AEOH01000054 (<i>C. ochracea</i> , strain F0287)	≥ 99% identical to GenBank: AEOH01000054 (<i>C. ochracea</i> , strain F0287)
Viability (post-freeze)³	Growth	Growth

¹Quality control of HMP material is only performed to demonstrate that the material distributed by BEI Resources is identical to the deposited material. It should not be considered a complete characterization of the deposited organism.

²*C. ochracea*, strain F0287 was deposited by Jacques Izard, Assistant Member of the Staff, Department of Molecular Genetics, The Forsyth Institute, Boston, Massachusetts. The deposited material was inoculated into Modified Chopped Meat Medium ([ATCC medium 1490](#)) and incubated for 24 hours at 37°C and anaerobic atmosphere (80% N₂:10% CO₂:10% H₂). Broth was then added to Kolles and incubated for 48 hours at 37°C and anaerobic atmosphere to produce this lot.

³24 hours at 37°C and anaerobic atmosphere on Tryptic Soy Agar with 5% defibrinated sheep blood

Figure 1



Date: 26 NOV 2012

Signature:

Title: Technical Manager, BEI Authentication or designee

ATCC®, on behalf of BEI Resources, hereby represents and warrants that the material provided under this certificate has been subjected to the tests and procedures specified and that the results described, along with any other data provided in this certificate, are true and accurate to the best of ATCC®'s knowledge.

ATCC® is a trademark of the American Type Culture Collection.

You are authorized to use this product for research use only. It is not intended for human use.

