

***Bordetella pertussis*, Strain I002**

Catalog No. NR-42461

Product Description: *Bordetella pertussis* (*B. pertussis*), strain I002 was isolated in 2012 from a nasopharyngeal swab of a patient with whooping cough in Washington, USA.

Lot¹: 62521232

Manufacturing Date: 13JUN2014

TEST	SPECIFICATIONS	RESULTS
Phenotypic Analysis Cellular morphology Colony morphologies Bordet Gengou agar ² Chocolate agar ^{3,4} Motility (wet mount) VITEK [®] MS (MALDI-TOF)	Gram-negative bacilli Report results Report results Report results Consistent with <i>B. pertussis</i>	Gram-negative coccobacilli to bacilli Circular, convex, entire, smooth, translucent and gray (Figure 1) Colony type 1: Punctiform and gray (Figure 2) Colony type 2: Circular, low convex, entire, smooth, opaque and gray (Figure 2) Non-motile Consistent with <i>B. pertussis</i>
Genotypic Analysis Sequencing of 16S ribosomal RNA gene (~ 650 base pairs)	Consistent with <i>B. pertussis</i>	Consistent with <i>B. pertussis</i> ⁵
Purity (post-freeze)⁶	Consistent with <i>B. pertussis</i>	Consistent with <i>B. pertussis</i>
Viability (post-freeze)²	Growth	Growth

¹NR-42461 was produced by inoculation of the deposited material into Bordet Gengou broth and grown 5 days at 37°C in an aerobic atmosphere.

Broth inoculum was added to Bordet Gengou agar kolles which were grown 4 days at 37°C in an aerobic atmosphere to produce this lot.

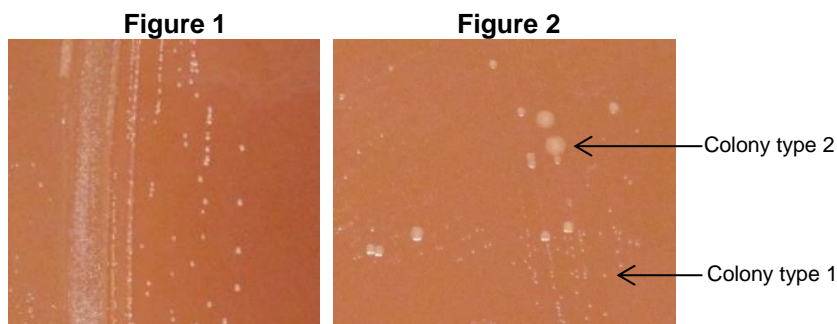
²12 days at 37°C in an aerobic atmosphere with 5% CO₂ on Bordet Gengou agar

³12 days at 37°C in an aerobic atmosphere with 5% CO₂ on Chocolate agar

⁴Two colony types were observed. Both colony types were subjected to VITEK[®] MS (MALDI-TOF) analysis and identified as *B. pertussis*.

⁵≥ 99.9% identical to GenBank: AXSI02000000 (*B. pertussis*, strain I002)

⁶Purity of this lot was assessed for 12 days on Bordet Gengou agar at 37°C in an aerobic atmosphere with 5% CO₂.



Certificate of Analysis for NR-42461

Date: 16 APR 2015

Signature: 
BEI Resources Authentication

ATCC[®], on behalf of BEI Resources, hereby represents and warrants that the material provided under this certificate has been subjected to the tests and procedures specified and that the results described, along with any other data provided in this certificate, are true and accurate to the best of ATCC[®]'s knowledge.

ATCC[®] is a trademark of the American Type Culture Collection.

You are authorized to use this product for research use only. It is not intended for human use.

