

Aspergillus fumigatus, Strain B6081

Catalog No. NR-35312

Product Description: *Aspergillus fumigatus* (*A. fumigatus*), strain B6081, is an environmental isolate obtained in 2002 in Montréal, Québec, Canada.

Lot¹: 62486470

Manufacturing Date: 14APR2014

TEST	SPECIFICATIONS	RESULTS
Phenotypic Analysis Colony morphology ² Surface, reverse Conidial morphology ² Conidia, conidiophore	Report results Report results	White to blue to green, hirsute, filiform; tan; (Figure 1A) Green, globose and smooth; hyaline (Figure 1B)
Genotypic Analysis Sequencing of internal transcribed spacer (ITS) 1, 5.8S ribosomal RNA (rRNA) gene, and ITS 2 (~ 720 base pairs) Sequencing of 28S rRNA gene (partial) (~ 540 base pairs) Sequencing of beta-tubulin gene (~ 620 base pairs)	Consistent with <i>A. fumigatus</i> Consistent with <i>A. fumigatus</i> Consistent with <i>A. fumigatus</i>	Consistent with <i>A. fumigatus</i> ³ Consistent with <i>A. fumigatus</i> ⁴ Consistent with <i>A. fumigatus</i> ⁵
Purity⁶ Yeast Mold agar at 25°C Nutrient broth with 0.1% Yeast Extract at 25°C Nutrient broth with 0.1% Yeast Extract at 37°C	No bacterial growth No bacterial growth No bacterial growth	No bacterial growth No bacterial growth No bacterial growth
Viability (post-freeze)²	Growth	Growth

¹NR-35312 was produced by growth of the deposited material on Modified Sabouraud Dextrose agar in an aerobic atmosphere at 25°C for 4 days.

²4 days at 25°C in an aerobic atmosphere on Yeast Mold agar

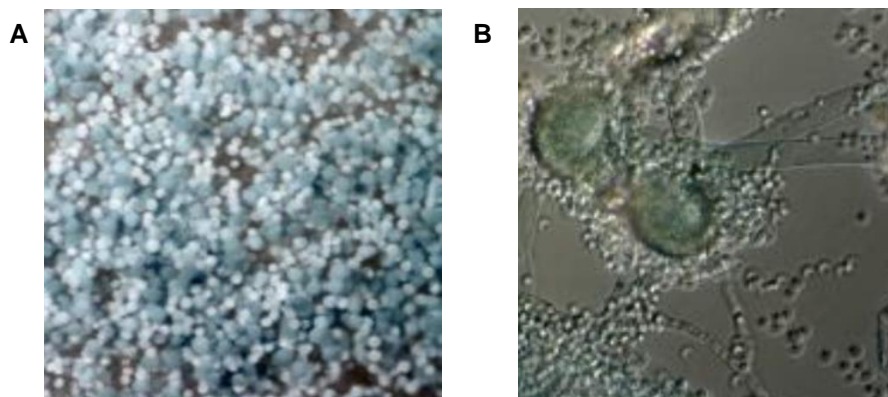
³100% identical to *A. fumigatus*, type strain ATCC[®] 1022[™] (GenBank: HQ026746.1)

⁴100% identical to *A. fumigatus*, type strain ATCC[®] 1022[™] (GenBank: AY660917.1)

⁵99.3% identical to *A. fumigatus*, strain ATCC[®] 36607[™] (GenBank: AY048754.1), type strain sequence unavailable

⁶Clarity of broth was determined by visual inspection after 3 days at 25°C and 37°C in an aerobic atmosphere.

Figure 1 – Colony and Conidial Morphology



Date: 17 APR 2015

Signature:



BEI Resources Authentication

ATCC[®], on behalf of BEI Resources, hereby represents and warrants that the material provided under this certificate has been subjected to the tests and procedures specified and that the results described, along with any other data provided in this certificate, are true and accurate to the best of ATCC[®]'s knowledge.

ATCC[®] is a trademark of the American Type Culture Collection.

You are authorized to use this product for research use only. It is not intended for human use.

