

***Bordetella holmesii*, Strain 1058**

Catalog No. NR-43502

Product Description: *Bordetella holmesii* (*B. holmesii*), strain 1058 was isolated in January 2012 from a human bloodstream sample in the United States.

Lot¹: 62484888

Manufacturing Date: 31OCT2014

TEST	SPECIFICATIONS	RESULTS
Phenotypic Analysis Cellular morphology Colony morphology ² Motility (wet mount) Biochemical tests Biolog™ System ³	Gram-negative bacilli Report results Report results Consistent with <i>B. holmesii</i>	Gram-negative bacilli Circular, low convex, entire, smooth, opaque and cream (Figure 1) Non-motile Consistent with <i>B. holmesii</i>
Genotypic Analysis Sequencing of 16S ribosomal RNA gene (~ 1470 base pairs)	Consistent with <i>B. holmesii</i>	Consistent with <i>B. holmesii</i>
Purity (post-freeze)⁴	Growth consistent with <i>B. holmesii</i>	Growth consistent with <i>B. holmesii</i>
Viability (post-freeze)²	Growth	Growth

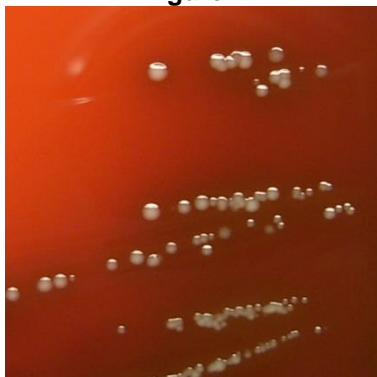
¹NR-43502 was produced by inoculation of the deposited material into Tryptic Soy broth and an aliquot was plated on Tryptic Soy agar with 5% defibrinated sheep blood and both were incubated for 4 days at 37°C in an aerobic atmosphere. Colonies from the plate were scraped into the Tryptic Soy broth growth and the growth mixture was added to Tryptic Soy agar with 5% defibrinated sheep blood kolles and grown for 4 days at 37°C in an aerobic atmosphere with 5% CO2 to produce this lot.

²4 days at 37°C in an aerobic atmosphere on Tryptic Soy agar

³Results interpreted using Biolog™ ID database GEN- III_2.7.1.40.15G and Biolog™ MicroLog ID software 3/5.2.01 33

⁴Purity of this lot was assessed for 7 days on Tryptic Soy agar at 37°C in an aerobic atmosphere.

Figure 1



Certificate of Analysis for NR-43502

Date: 09 JAN 2015

Signature: 

Title: Technical Manager, BEI Authentication or designee

ATCC[®], on behalf of BEI Resources, hereby represents and warrants that the material provided under this certificate has been subjected to the tests and procedures specified and that the results described, along with any other data provided in this certificate, are true and accurate to the best of ATCC[®]'s knowledge.

ATCC[®] is a trademark of the American Type Culture Collection.

You are authorized to use this product for research use only. It is not intended for human use.

