

***Streptococcus* sp., Oral Taxon 070, Strain F0441**

Catalog No. HM-806

Product Description: *Streptococcus* sp., Oral Taxon 070, strain F0441 was isolated in 2008 from dental plaque of a molar tooth from a 3-year-old healthy female.

Lot^{1,2}: 63529421

Manufacturing Date: 28MAY2015

TEST	SPECIFICATIONS	RESULTS
Phenotypic Analysis Cellular morphology Colony morphology ³ Motility (wet mount)	Gram-positive cocci Report results Report results	Gram-positive cocci Circular, low convex, entire, smooth and gray (Figure 1) Non-motile
Genotypic Analysis Sequencing of 16S ribosomal RNA gene (~ 850 base pairs)	≥ 99% identical to GenBank: AGZY010000011(<i>Streptococcus</i> sp., Oral Taxon 070, strain F0441)	≥ 99% identical to GenBank: AGZY010000011(<i>Streptococcus</i> sp., Oral Taxon 070, strain F0441)
Purity (post-freeze)⁴	Growth consistent with <i>Streptococcus</i> sp.	Growth consistent with <i>Streptococcus</i> sp.
Viability (post-freeze)³	Growth	Growth

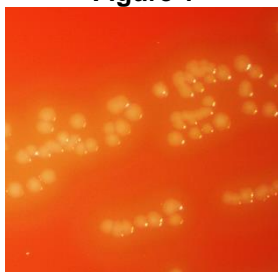
¹Quality control of HMP material is only performed to demonstrate that the material distributed by BEI Resources is identical to the deposited material. It should not be considered a complete characterization of the deposited organism.

²*Streptococcus* sp., Oral Taxon 070, strain F0441 was deposited by Jacques Izard, Ph.D., Assistant Member of the Staff, Department of Molecular Genetics, The Forsyth Institute, Cambridge, Massachusetts, USA. The deposited material was inoculated into Tryptic Soy broth and incubated for 1 day at 37°C in an aerobic atmosphere with 5% CO₂. Broth inoculum was added to Tryptic Soy agar with 5% defibrinated sheep blood kolles which were grown for 1 day at 37°C in an aerobic atmosphere with 5% CO₂ to produce this lot.

³1 day on Tryptic Soy agar with 5% defibrinated sheep blood at 37°C in an aerobic atmosphere with 5% CO₂

⁴Purity of this lot was assessed for 7 days on Tryptic Soy agar with 5% defibrinated sheep blood at 37°C in an aerobic atmosphere with 5% CO₂.

Figure 1



Date: 07 JUL 2015

Signature: 
BEI Resources Authentication

ATCC®, on behalf of BEI Resources, hereby represents and warrants that the material provided under this certificate has been subjected to the tests and procedures specified and that the results described, along with any other data provided in this certificate, are true and accurate to the best of ATCC®'s knowledge.

ATCC® is a trademark of the American Type Culture Collection. You are authorized to use this product for research use only. It is not intended for human use.

