

Bartonella quintana, Strain JK63

Catalog No. NR-31831

Product Description: *Bartonella quintana* (*B. quintana*), strain JK63 was isolated in July 1996 from the cutaneous bacillary angiomatosis lesion of a patient in San Francisco, California, USA, who presented with bacillary angiomatosis subcutaneous nodules.

Lot¹: 63950623

Manufacturing Date: 24MAR2016

TEST	SPECIFICATIONS	RESULTS
Phenotypic Analysis Cellular morphology Colony morphology ² Motility (wet mount) Biochemical tests: Catalase Oxidase	Gram-negative rods Report results Report results Negative Negative	Gram-negative rods Circular, low convex, entire, smooth and cream (Figure 1) Motile Negative Negative
Genotypic Analysis Sequencing of 16S ribosomal RNA gene (~ 860 base pairs)	≥ 99% sequence identity to <i>B. quintana</i> , strain JK63 (GenBank: AHPF01000001.1)	99.9% sequence identity to <i>B. quintana</i> , strain JK63 (GenBank: AHPF01000001.1) ³
Purity (post-freeze)⁴	Consistent with expected colony morphology	Consistent with expected colony morphology
Viability (post-freeze)²	Growth	Growth

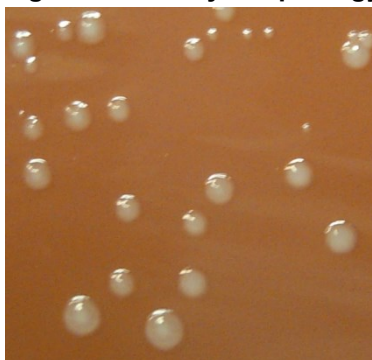
¹NR-31831 was produced by inoculation of the deposited material into Brain Heart Infusion broth. Broth inoculum was added to Chocolate agar and grown for 10 days at 37°C in an aerobic atmosphere with 5% CO₂. A loopful of colonies from the Chocolate agar growth was suspended in Heart Infusion broth and used to inoculate Chocolate agar kolles, which were grown for 7 days at 37°C in an aerobic atmosphere with 5% CO₂ to produce this lot.

²8 days at 37°C in an aerobic atmosphere with 5% CO₂ on Chocolate agar

³Also consistent with other *Bartonella* species

⁴Purity of this lot was assessed for 8 days at 37°C in an aerobic atmosphere with 5% CO₂ on Tryptic Soy agar with 5% defibrinated sheep blood.

Figure 1: Colony Morphology



Date: 09 MAY 2016

Signature: 

BEI Resources Authentication

ATCC®, on behalf of BEI Resources, hereby represents and warrants that the material provided under this certificate has been subjected to the tests and procedures specified and that the results described, along with any other data provided in this certificate, are true and accurate to the best of ATCC®'s knowledge.

ATCC® is a trademark of the American Type Culture Collection.

You are authorized to use this product for research use only. It is not intended for human use.

