

***Bartonella quintana*, Strain JK68**

Catalog No. NR-31829

Product Description: *Bartonella quintana* (*B. quintana*), strain JK68 was isolated in October 2005 from the blood of a human patient with subcutaneous bacillary angiomatosis nodules in San Francisco, California, USA.

Lot¹: 63950571

Manufacturing Date: 18MAR2016

TEST	SPECIFICATIONS	RESULTS
Phenotypic Analysis Cellular morphology Colony morphology ² Motility (wet mount) Biochemical tests: Catalase Oxidase	Gram-negative rods Report results Report results Negative Negative	Gram-negative rods Circular, low convex, entire, smooth and cream (Figure 1) Motile Negative Negative
Genotypic Analysis Sequencing of 16S ribosomal RNA gene (~ 1400 base pairs)	≥ 99% sequence identity to <i>B. quintana</i> , strain JK68 (GenBank: AHPD01000001.1)	99.9% sequence identity to <i>B. quintana</i> , strain JK68 (GenBank: AHPD01000001.1) ³
Purity (post-freeze)⁴	Consistent with expected colony morphology	Consistent with expected colony morphology
Viability (post-freeze)²	Growth	Growth

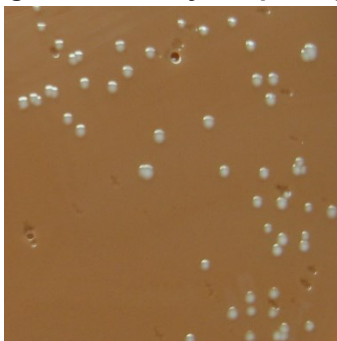
¹NR-31829 was produced by inoculation of the deposited material into Heart Infusion broth and grown for 8 days at 37°C in an aerobic atmosphere with 5% CO₂. Broth inoculum was added to Bartonella Chocolate agar kolles, which were grown for 7 days at 37°C in an aerobic atmosphere with 5% CO₂ to produce this lot.

²7 days on Bartonella Chocolate agar at 37°C in an aerobic atmosphere with 5% CO₂

³Also consistent with other *Bartonella* species

⁴Purity of this lot was assessed for 7 days on Tryptic Soy agar with 5% defibrinated sheep blood at 37°C in an aerobic atmosphere with 5% CO₂.

Figure 1: Colony Morphology



Date: 13 MAY 2016

Signature:



BEI Resources Authentication

ATCC®, on behalf of BEI Resources, hereby represents and warrants that the material provided under this certificate has been subjected to the tests and procedures specified and that the results described, along with any other data provided in this certificate, are true and accurate to the best of ATCC®'s knowledge.

ATCC® is a trademark of the American Type Culture Collection.

You are authorized to use this product for research use only. It is not intended for human use.

