

**Genomic DNA from *Francisella tularensis* subsp. *novicida*, Strain CG21**

**Catalog No. NR-3034**

**Product Description:** Genomic DNA was isolated from a preparation of *Francisella tularensis* (*F. tularensis*) subsp. *novicida*, strain CG21.

**Lot<sup>1</sup>: 7562884**

**Manufacturing Date: 14SEP2006**

TEST	SPECIFICATIONS	RESULTS
<b>Sequencing of 16S Ribosomal RNA Gene (~ 1310 bp)</b>	Identical to GenBank CP000439 Consistent with <i>F. tularensis</i> subsp. <i>novicida</i>	Identical to GenBank CP000439 Consistent with <i>F. tularensis</i> subsp. <i>novicida</i> <sup>2</sup>
<b>Agarose Gel Electrophoresis</b>	High molecular weight chromosomal DNA	High molecular weight chromosomal DNA (Figure 1)
<b>Concentration by PicoGreen<sup>®</sup> Measurement</b>	4 to 6 µg in 25 to 100 µL per vial	4.9 µg in 50 µL per vial (98 µg/mL)
<b>Functional Activity by PCR Amplification</b> 16S ribosomal RNA gene Molecular subtyping <sup>3,4</sup>	~ 1500 bp amplicon ~ 390 bp amplicon (non-type B)	~ 1500 bp amplicon ~ 390 bp amplicon (non-type B)
<b>OD<sub>260</sub>/OD<sub>280</sub> Ratio</b>	1.7 to 1.9	1.9
<b>Bacterial Inactivation</b> 10% of total yield plated on Trypticase Soy Agar with 5% sheep blood <sup>5,6</sup>	No viable bacteria detected	No viable bacteria detected

<sup>1</sup>*F. tularensis* subsp. *novicida*, strain CG21 was extracted from NR-579 (Lot: 4067734) on Difco™ Cystine Heart Agar (BD 247100) with 5% defibrinated rabbit blood. After incubation for 26 hours at 37°C in an aerobic atmosphere with 5% CO<sub>2</sub>, genomic DNA was extracted using proprietary technology.

<sup>2</sup>Also consistent with other *F. tularensis* subspecies.

<sup>3</sup>Petersen, J. M., et al. "Laboratory Analysis of Tularemia in Wild-Trapped, Commercially Traded Prairie Dogs, Texas, 2002." *Emerg. Infect. Dis.* 10 (2004): 419–425. PubMed: 15109407.

<sup>4</sup>Kugeler, K. J., et al. "Real-time PCR for *Francisella tularensis* Types A and B." *Emerg. Infect. Dis.* 12 (2006): 1799–1801. PubMed: 17283646.

<sup>5</sup>Incubated for 7 days at 37°C and aerobic atmosphere with 5% CO<sub>2</sub>.

<sup>6</sup>An extraction procedure was used that has been shown to consistently inactivate 100% of Gram-negative bacteria.

**Date:** 24 JUL 2007

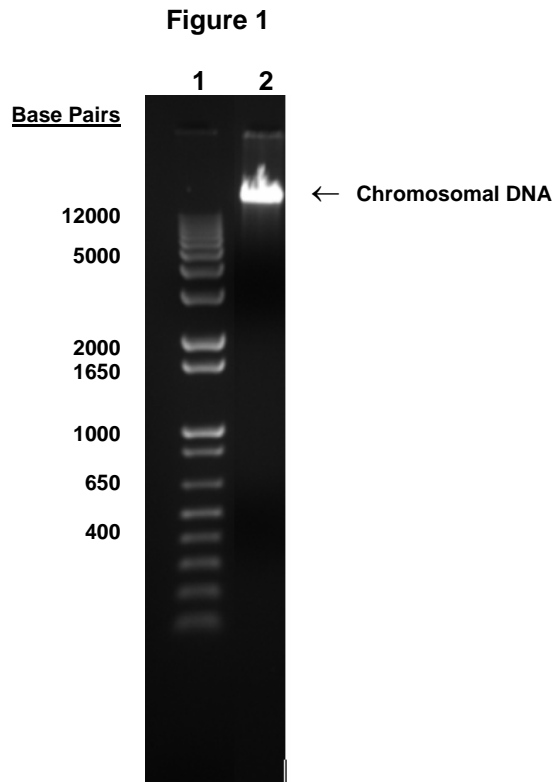
**Signature:** Signature on File

**Title:** Technical Manager, BEI Authentication or designee

ATCC<sup>®</sup>, on behalf of BEI Resources, hereby represents and warrants that the material provided under this certificate has been subjected to the tests and procedures specified and that the results described, along with any other data provided in this certificate, are true and accurate to the best of ATCC<sup>®</sup>'s knowledge.

ATCC<sup>®</sup> is a trademark of the American Type Culture Collection.

You are authorized to use this product for research use only. It is not intended for human use.



Lane 1: Invitrogen™ TrackIt™ 1 Kb Plus DNA Ladder  
Lane 2: 200 ng of NR-3034