

***Pseudomonas aeruginosa*, Strain EnvKY2**

**Catalog No. NR-51330**

**Product Description:** *Pseudomonas aeruginosa* (*P. aeruginosa*), strain EnvKY2 was isolated from a soil sample taken from a farm in Maysville, Kentucky, USA.

**Lot<sup>1</sup>: 70017406**

**Manufacturing Date: 25JUL2018**

TEST	SPECIFICATIONS	RESULTS
<b>Phenotypic Analysis</b> Cellular morphology Colony morphologies <sup>2,3</sup>  Motility (wet mount) VITEK <sup>®</sup> MS (MALDI-TOF)	Gram-negative rods Report results  Report results <i>P. aeruginosa</i>	Gram-negative rods Colony type 1: Circular, convex, undulate, smooth and green (Figure 1) Colony type 2: Circular, low convex, undulate, rough and green (Figure 1) Motile <i>P. aeruginosa</i> (99.9%)
<b>Genotypic Analysis</b> Sequencing of 16S ribosomal RNA gene (~ 1460 base pairs)	≥ 99% sequence identity to <i>P. aeruginosa</i> , strain EnvKY2 (GenBank: NKXY01000045.1)	99.9% sequence identity to <i>P. aeruginosa</i> , strain EnvKY2 (GenBank: NKXY01000045.1)
<b>Purity (post-freeze)<sup>4</sup></b>	Growth consistent with expected colony morphology	Growth consistent with expected colony morphology
<b>Viability (post-freeze)<sup>2</sup></b>	Growth	Growth

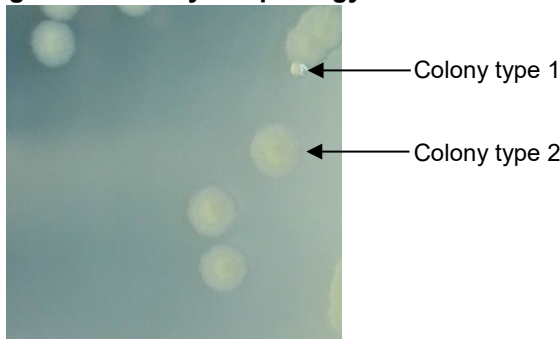
<sup>1</sup>NR-51330 was produced by inoculation of BEI Resources HMC-593 lot 59644645 into Tryptic Soy broth and grown for 1 day at 37°C in an aerobic atmosphere. Broth inoculum was added to Tryptic Soy agar kolles, which were grown for 1 day at 37°C in an aerobic atmosphere to produce this lot.

<sup>2</sup>1 day at 37°C in an aerobic atmosphere on Tryptic Soy agar

<sup>3</sup>Two colony types were observed. Plating of the individual colony types showed that they did not revert to the mixed colony type. VITEK<sup>®</sup> MS (MALDI-TOF) analysis identified cells from both colony types as *P. aeruginosa*. The 16S ribosomal RNA gene of each colony type was sequenced and found to have 99.9% sequence identity to the other colony type and to *P. aeruginosa*, strain EnvKY2 (GenBank: NKXY01000045.1).

<sup>4</sup>Purity of this lot was assessed for 7 days on Tryptic Soy agar at 37°C in an aerobic atmosphere with 5% CO<sub>2</sub>

**Figure 1: Colony Morphology**



/Heather Couch/

Heather Couch

09 NOV 2018

Program Manager or designee, ATCC Federal Solutions

ATCC®, on behalf of BEI Resources, hereby represents and warrants that the material provided under this certificate has been subjected to the tests and procedures specified and that the results described, along with any other data provided in this certificate, are true and accurate to the best of ATCC®'s knowledge.

ATCC® is a trademark of the American Type Culture Collection.

You are authorized to use this product for research use only. It is not intended for human use.

