

***Coccidioides immitis*, Strain 3479**

**Catalog No. NR-48940**

**Product Description:**

*Coccidioides immitis* (*C. immitis*), strain 3479 was isolated in the 1990s from a human in Guerrero, Mexico.

**Lot: 70018688<sup>1</sup>**

**Manufacturing Date: 26SEP2018**

TEST	SPECIFICATIONS	RESULTS
<b>Phenotypic Analysis</b> Colony morphology <sup>2</sup>	Report results	Circular, convex, entire, membranous, dull and white (Figure 1)
<b>Genotypic Analysis<sup>3</sup></b> Sequencing of partial 18S ribosomal RNA (rRNA) gene, internal transcribed spacer (ITS) 1, 5.8S rRNA gene, ITS 2, partial 26S rRNA (~ 570 base pairs) Sequencing of 28S rRNA gene (~ 970 base pairs)	≥ 99% sequence identity to <i>C. immitis</i> , strain RS (GenBank: AAEC03000008.1) <sup>4</sup> ≥ 99% sequence identity to <i>C. immitis</i> , strain RS (GenBank: AAEC03000008.1) <sup>4</sup>	100% sequence identity to <i>C. immitis</i> , strain RS (GenBank: AAEC03000008.1) <sup>5</sup> 100% sequence identity to <i>C. immitis</i> , strain RS (GenBank: AAEC03000008.1) <sup>5</sup>
<b>Purity<sup>5</sup></b> Nutrient broth with 0.1% Yeast Extract at 25°C Nutrient broth with 0.1% Yeast Extract at 37°C	No bacterial growth No bacterial growth	Non-turbid growth Non-turbid growth
<b>Viability (post-freeze)<sup>6</sup></b>	Growth	Growth

<sup>1</sup>NR-48940 was produced by inoculation of the deposited material into Emmons' Modified Sabouraud Dextrose broth. Broth inoculum was added to Emmons' Modified Sabouraud Dextrose agar kolles, which were grown for 10 days at 37°C in an aerobic atmosphere with 5% CO<sub>2</sub>. The agar growth was harvested with 20% glycerol to produce this lot.

<sup>2</sup>17 days at 37°C in an aerobic atmosphere with 5% CO<sub>2</sub> on Emmons' Modified Sabouraud Dextrose agar

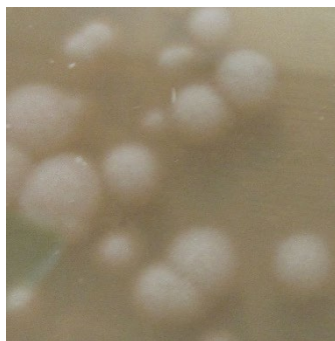
<sup>3</sup>*C. immitis* and *C. posadasii* cannot be identified to the species level based on ITS and large subunit rRNA sequences (Tintelnot, K., et al. "Taxonomic and Diagnostic Markers for Identification of *Coccidioides immitis* and *Coccidioides posadasii*." *Med. Mycol.* 45 (2007): 385-393. PubMed: 17654264.).

<sup>4</sup>*C. immitis*, strain RS is the reference strain for *C. immitis*.

<sup>5</sup>Also consistent with *C. posadasii*.

<sup>6</sup>Clarity of broth was determined by visual inspection after 10 days in an aerobic atmosphere with 5% CO<sub>2</sub>.

**Figure 1: Colony Morphology**



/Heather Couch/

Heather Couch

23 AUG 2019

Program Manager or designee, ATCC Federal Solutions

ATCC®, on behalf of BEI Resources, hereby represents and warrants that the material provided under this certificate has been subjected to the tests and procedures specified and that the results described, along with any other data provided in this certificate, are true and accurate to the best of ATCC®'s knowledge.

ATCC® is a trademark of the American Type Culture Collection.

You are authorized to use this product for research use only. It is not intended for human use.

