

**Scardovia wiggisiae, Oral Taxon 195, Strain F0424**

**Catalog No. HM-470**

**Product Description:**

*Scardovia wiggisiae* (*S. wiggisiae*), strain F0424 is an oral isolate obtained in 2006 from a child suffering from dental caries in USA. HM-470 lot 70031783 was produced by the inoculation of the depositor material into Trypticase Soy Yeast Extract broth and incubated for 2 days at 37°C in an anaerobic atmosphere (< 5% O<sub>2</sub>; Remel™ Pack-Anaero™). The material from the initial growth was passaged once in Trypticase Soy Yeast Extract broth for 3 days at 37°C in an anaerobic atmosphere to produce this lot.

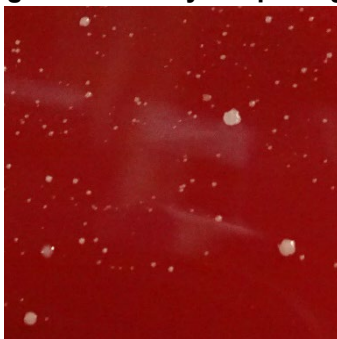
Note: Quality control of HMP material is only performed to demonstrate that the material distributed by BEI Resources is identical to the deposited material. It should not be considered a complete characterization of the deposited organism.

**Lot: 70031783**

**Manufacturing Date: 20JAN2020**

TEST	SPECIFICATIONS	RESULTS
<b>Phenotypic Analysis</b> Cellular morphology Colony morphology 7 days at 37°C in an anaerobic atmosphere on Tryptic Soy agar with 5% defibrinated sheep blood Motility (wet mount)	Gram-positive rods Report results  Report results	Gram-positive rods Circular, raised, entire, smooth and white (Figure 1)  Non-motile
<b>Genotypic Analysis</b> Sequencing of 16S ribosomal RNA gene (~ 1420 base pairs)	≥ 99% sequence identity to <i>S. wiggisiae</i> , strain F0424 (GenBank: AGZS01000006.1)	100% sequence identity to <i>S. wiggisiae</i> , strain F0424 (GenBank: AGZS01000006.1)
<b>Purity (post-freeze)</b> 7 days at 37°C in an anaerobic atmosphere on Tryptic Soy agar with 5% defibrinated sheep blood 7 days at 37°C in an aerobic atmosphere with 5% CO <sub>2</sub> on Tryptic Soy agar with 5% defibrinated sheep blood	Growth consistent with expected colony morphology  No growth	Growth consistent with expected colony morphology  No growth
<b>Viability (post-freeze)</b> 7 days at 37°C in an anaerobic atmosphere on Tryptic Soy agar with 5% defibrinated sheep blood	Growth	Growth

**Figure 1: Colony Morphology**



/Heather Couch/

Heather Couch

20 APR 2020

Program Manager or designee, ATCC Federal Solutions

ATCC®, on behalf of BEI Resources, hereby represents and warrants that the material provided under this certificate has been subjected to the tests and procedures specified and that the results described, along with any other data provided in this certificate, are true and accurate to the best of ATCC®'s knowledge.

ATCC® is a trademark of the American Type Culture Collection.

You are authorized to use this product for research use only. It is not intended for human use.

