

Bacillus megaterium, Strain Ford 19

Catalog No. NR-52259

(Derived from ATCC® 14581™)

Product Description:

Bacillus megaterium (*B. megaterium*), strain Ford 19 was isolated by W. W. Ford and was deposited at ATCC® in 1962 by Dr. Ruth E. Gordon, Institute of Microbiology, Rutgers University, New Brunswick, New Jersey, USA. NR-52259 lot 70033090 was produced by inoculation of the deposited material into Nutrient broth and grown for 1 day at 30°C in an aerobic atmosphere. Broth inoculum was added to Nutrient agar kolles, which were grown for 1 day at 30°C in an aerobic atmosphere to produce this lot.

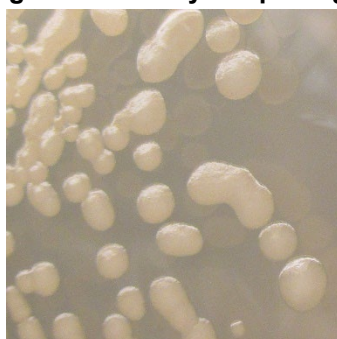
Lot: 70033090

Manufacturing Date: 26FEB2020

TEST	SPECIFICATIONS	RESULTS
Phenotypic Analysis Cellular morphology Colony morphology 1 day at 30°C in an aerobic atmosphere on Nutrient agar Hemolysis Motility (wet mount) Biochemical tests Catalase VITEK® MS (MALDI-TOF)	Gram-positive bacilli Report results Report results Report results Report results <i>B. megaterium</i>	Gram-positive bacilli Circular, convex, entire, smooth and cream (Figure 1) Non-hemolytic Motile Negative <i>B. megaterium</i> (99.9%)
Genotypic Analysis Sequencing of 16S ribosomal RNA gene (~ 1490 base pairs)	≥ 99% sequence identity to <i>B. megaterium</i> , strain Ford 19 (GenBank: CP009920.1)	99.9% sequence identity to <i>B. megaterium</i> , strain Ford 19 (GenBank: CP009920.1) ¹
Purity (post-freeze) 7 days at 37°C in an aerobic atmosphere with 5% CO ₂ on Tryptic Soy agar with 5% defibrinated sheep blood	Consistent with expected colony morphology	Consistent with expected colony morphology
Viability (post-freeze) 1 day at 30°C in an aerobic atmosphere on Nutrient agar	Growth	Growth

¹Also consistent with *B. aryabhatai*

Figure 1: Colony Morphology



/Heather Couch/

Heather Couch

15 APR 2020

Program Manager or designee, ATCC Federal Solutions

ATCC[®], on behalf of BEI Resources, hereby represents and warrants that the material provided under this certificate has been subjected by ATCC[®] to the tests and procedures specified and that the results described, along with any other data provided in this certificate, are true and accurate to the best of ATCC[®]'s knowledge.

ATCC[®] is a trademark of the American Type Culture Collection.

You are authorized to use this product for research use only. It is not intended for human use.

