

Paenibacillus polymyxa, Strain NCIB 8158

Catalog No. NR-52263

(Derived from ATCC® 842™)

Product Description:

Paenibacillus polymyxa (*P. polymyxa*), strain NCIB 8158 originates from the culture collection belonging to A. J. Kluyver. NR-52263 lot 70033112 was produced by inoculation of the deposited material into Nutrient broth and grown for 1 day at 30°C in an aerobic atmosphere. Broth inoculum was added to Nutrient agar kolles, which were grown for 1 day at 30°C in an aerobic atmosphere to produce this lot.

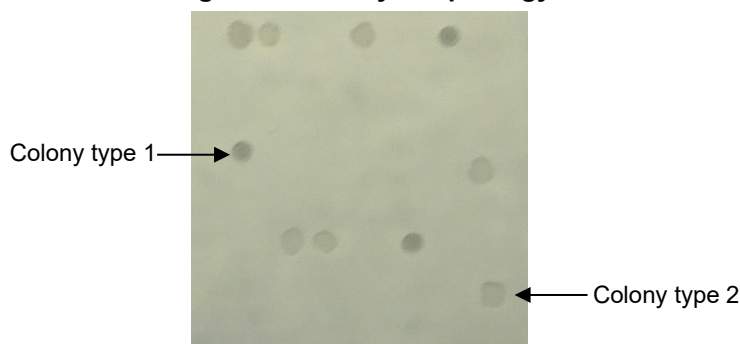
Lot: 70033112

Manufacturing Date: 27FEB2020

TEST	SPECIFICATIONS	RESULTS
Phenotypic Analysis Cellular morphology Colony morphology 1 day at 30°C in an aerobic atmosphere on Nutrient agar Motility (wet mount) VITEK® MS (MALDI-TOF)	Gram-positive bacilli Report results Report results <i>P. polymyxa</i>	Gram-positive bacilli Colony type 1: Circular, raised, entire and translucent (Figure 1) Colony type 2: Irregular, flat, undulate and translucent (Figure 1) Motile <i>P. polymyxa</i> (99.9%)
Genotypic Analysis Sequencing of 16S ribosomal RNA gene (~ 1500 base pairs)	≥ 99% sequence identity to <i>P. polymyxa</i> , strain NCIB 8158 (GenBank: AFOX01000032.1)	99.4% sequence identity to <i>P. polymyxa</i> , strain NCIB 8158 (GenBank: AFOX01000032.1) ¹
Purity (post-freeze) 7 days at 37°C in an aerobic atmosphere with 5% CO ₂ on Tryptic Soy agar with 5% defibrinated sheep blood	Growth consistent with expected colony morphology	Growth consistent with expected colony morphology
Viability (post-freeze) 1 day at 30°C in an aerobic atmosphere on Nutrient agar	Growth	Growth

¹Also consistent with *P. jamilae*

Figure 1: Colony Morphology



/Heather Couch/

Heather Couch

18 MAY 2020

Program Manager or designee, ATCC Federal Solutions

ATCC®, on behalf of BEI Resources, hereby represents and warrants that the material provided under this certificate has been subjected by ATCC® to the tests and procedures specified and that the results described, along with any other data provided in this certificate, are true and accurate to the best of ATCC®'s knowledge.

ATCC® is a trademark of the American Type Culture Collection.

You are authorized to use this product for research use only. It is not intended for human use.

