

Bacillus licheniformis, Strain Gibson 46

Catalog No. NR-52262

(Derived from ATCC® 14580™)

Product Description:

Bacillus licheniformis (*B. licheniformis*), strain Gibson 46 was originally isolated by Dr. T. Gibson, College of Agriculture, Edinburgh, United Kingdom. NR-52262 lot 70033110 was produced by inoculation of the deposited material into Nutrient broth and grown for 1 day at 37°C in an aerobic atmosphere. Broth inoculum was added to Nutrient agar kolles, which were grown for 1 day at 37°C in an aerobic atmosphere to produce this lot.

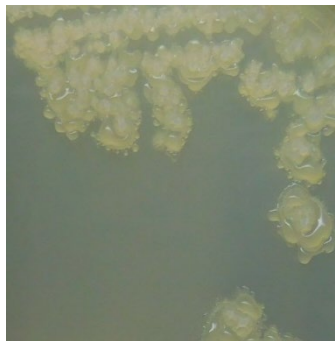
Lot: 70033110

Manufacturing Date: 26FEB2020

TEST	SPECIFICATIONS	RESULTS
Phenotypic Analysis Cellular morphology Colony morphology 1 day at 37°C in an aerobic atmosphere on Nutrient agar Hemolysis Motility (wet mount) Biochemical tests Catalase VITEK® MS (MALDI-TOF)	Gram-positive bacilli Report results Report results Report results Report results <i>B. licheniformis</i>	Gram-positive bacilli Irregular, raised, erose, mucoid, rough and cream. (Figure 1) β-hemolytic Motile Positive <i>B. licheniformis</i> (99.9%)
Genotypic Analysis Sequencing of 16S ribosomal RNA gene (~ 1320 base pairs)	≥ 99% sequence identity to <i>B. licheniformis</i> , strain NCIB 9375 (GenBank: CP000002.3)	99.6% sequence identity to <i>B. licheniformis</i> , strain NCIB 9375 (GenBank: CP000002.3) ¹
Purity (post-freeze) 7 days at 37°C in an aerobic atmosphere with 5% CO ₂ on Tryptic Soy agar with 5% defibrinated sheep blood	Growth consistent with expected colony morphology	Growth consistent with expected colony morphology
Viability (post-freeze) 1 day at 37°C in an aerobic atmosphere on Nutrient agar	Growth	Growth

¹Also consistent with other *Bacillus* species

Figure 1: Colony Morphology



/Heather Couch/

Heather Couch

15 JUN 2020

Program Manager or designee, ATCC Federal Solutions

ATCC®, on behalf of BEI Resources, hereby represents and warrants that the material provided under this certificate has been subjected by ATCC® to the tests and procedures specified and that the results described, along with any other data provided in this certificate, are true and accurate to the best of ATCC®'s knowledge.

ATCC® is a trademark of the American Type Culture Collection.

You are authorized to use this product for research use only. It is not intended for human use.

