

***Borrelia burgdorferi*, Signature-Tagged Mutagenesis Library Clone T03TC121 (Gene IR_BB_L35-BB_L36)**

Catalog No. NR-22408

Product Description:

Borrelia burgdorferi (*B. burgdorferi*), strain B31 5A18NP1 STM library clone T03TC121 was produced by signature-tagged mutagenesis (STM) of the intergenic region between the BB_L35 and BB_L36 genes. NR-22408 was produced by inoculation of the deposited material into Revised Barbour-Stoenner-Kelly medium supplemented with 200 µg per mL kanamycin and 40 µg per mL gentamicin and grown for 13 days at 32°C in a microaerophilic atmosphere to produce this lot. Quality control testing was completed under propagation conditions unless otherwise noted.

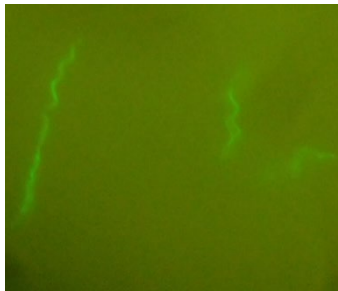
Lot: 70045498

Manufacturing Date: 19JUL2021

TEST	SPECIFICATIONS	RESULTS
Phenotypic Analysis Cellular morphology Motility (wet mount)	Spirochete Report results	Spirochete Motile
Purity 13 days at 37°C in an aerobic atmosphere with 5% CO ₂ in Tryptic Soy agar with 5% defibrinated sheep blood	No growth	No growth
Viability (post-freeze) Visual observation LIVE/DEAD® BacLight™ Bacterial Viability	Growth Green fluorescence visible	Growth Green fluorescence visible ¹

¹Determined after 13 days at 32°C in a microaerophilic atmosphere in Revised Barbour-Stoenner-Kelly broth supplemented with 200 µg per mL kanamycin and 40 µg per mL gentamicin with LIVE/DEAD® BacLight™ Bacterial Viability Kit, 1000× magnification (Invitrogen™ L7007). Cells with a compromised membrane that are dead or dying will stain red, while cells with an intact membrane will stain green.

Figure 1: LIVE/DEAD® BacLight™ Bacterial Viability



/Heather Couch/
Heather Couch

Program Manager or designee, ATCC Federal Solutions

28 OCT 2021

ATCC®, on behalf of BEI Resources, hereby represents and warrants that the material provided under this certificate has been subjected to the tests and procedures specified and that the results described, along with any other data provided in this certificate, are true and accurate to the best of ATCC®'s knowledge.

ATCC® is a trademark of the American Type Culture Collection.

You are authorized to use this product for research use only. It is not intended for human use.

